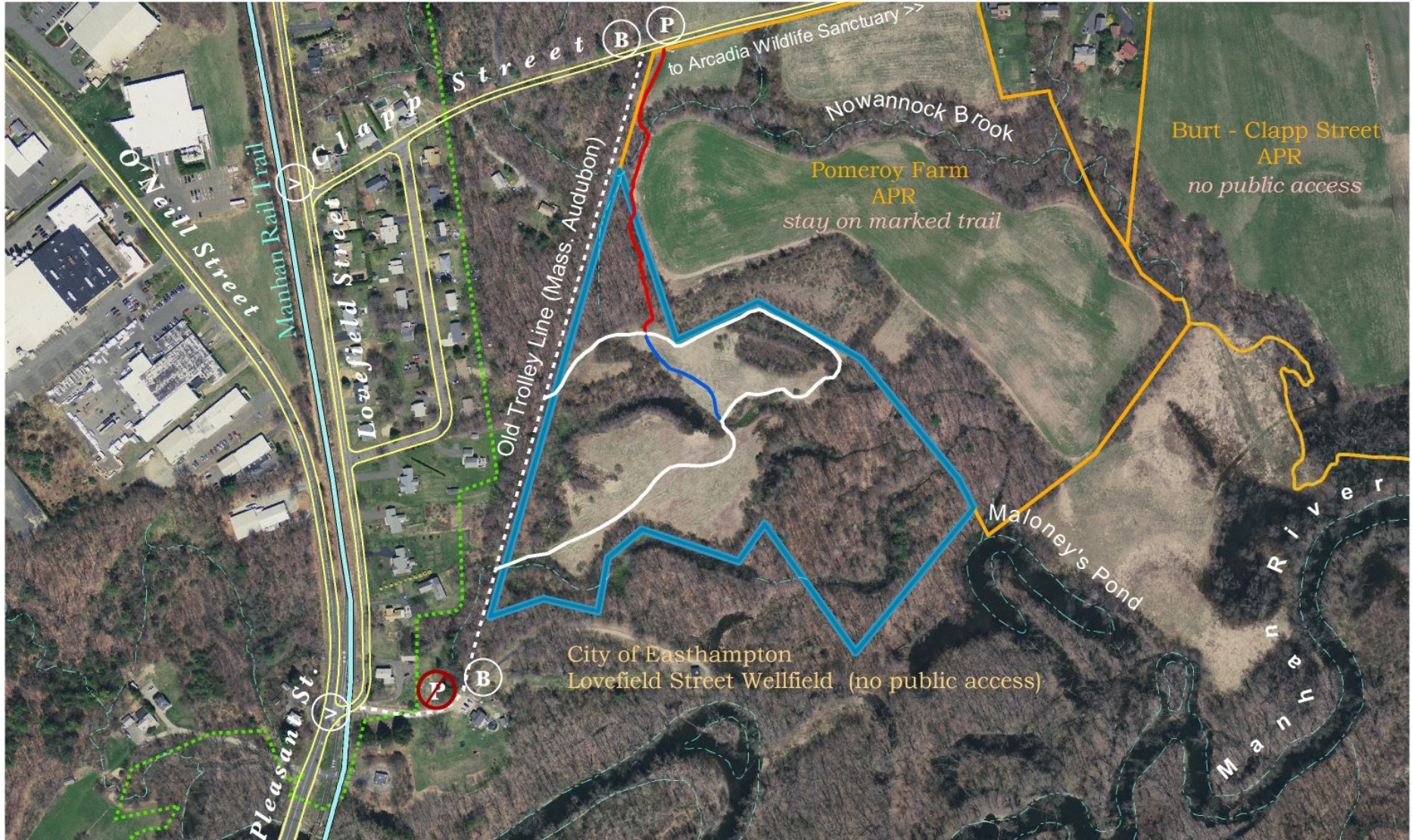


# Old Trolley Line Conservation Area



Protect this sensitive natural area, trails, and other visitors: **DOGS & BICYCLES ARE NOT ALLOWED** (bike racks are provided at entrances). Please do not disturb wildlife or plants. No dumping (including yard waste) or off-road vehicles. Please stay on marked trails and out of farm fields.

Lovefield Division Trail		Old Trolley Line Conservation Area boundary		Streams and ponds	
Pomeroy Farm Trail		Farmland protected with PCT assistance		Critical habitat boundary	
Asparagus Meadow Cut-Off		Public allowed ONLY on marked trail			
Old Trolley Line		Car parking		Bike racks	
		Sign at Rail Trail			