

Celebrate a loved one . . .
Commemorate a great event . . .
Boost your local business . . .

and help us maintain Easthampton's
treasured natural areas
and public trails.

1982-2022

*40 Years of
Saving the
Best of
Easthampton's
Nature for All*



Pascommuck Conservation Trust has ~~15~~ **7** remaining beautiful sites waiting for beautiful benches & chairs: We want to add to the welcome our conservation areas offer visitors as we celebrate 40 years of conservation.

Your dedicated donation will purchase a sturdy bench (\$1500 minimum) or chair (\$800 minimum), pay for a commemorative plaque, AND add to our Stewardship Endowment for the future.

The Endowment generates income to help cover such costs as keeping trails clear of downed trees, annual mowing to maintain bird habitat, rebuilding bridges & steps, and fighting invasive plants -- all critical to ensuring our conservation areas remain welcoming, beautiful, and ecologically healthy.

[details inside](#)

WHY

Pascommuck Conservation Trust has no paid staff, meaning your gifts always go directly towards protecting land, maintaining our conservation areas for public access and habitat protection, and the few unavoidable expenses such as accounting necessary to keep operating.

We have also relied almost entirely on board & volunteer hours for property upkeep. But in recent times, the added burdens of damage from severe weather, aging board members, and increased use of our conservation areas has made it necessary to supplement our own time with contracted part-time assistance, particularly for any work requiring specialized expertise or involving heavy equipment.

We are asking for your help in building a modest endowment to supplement our regular fundraising and cover not only a portion of those contractor fees, but also materials for replacement or new bog bridges, steps, etc., clearing downed trees, sign maintenance, enhancement of habitat for wildlife and native plants, and other ongoing stewardship.

HOW

Pascommuck will be accepting bids and gift pledges for the bench endowment starting in August 2020 and ending January 2023. Subject to the discretion of the Board, opportunities to endow a bench at a particular location will be 'first come, first served'. We would be happy to discuss with anyone interested in donating the details of bench locations and options, to consider dedication wording with you, and to guide visits to the sites.

Each bench will have only one plaque with limited space, but you are welcome to combine gifts from family members, a business, or a group to make up the full cost of your bench.

Partial fulfillment of pledges will be requested upon final selection, so cost of materials and contractors can be covered. Accounting for fabrication delays and weather (and remembering we are all volunteers!), installation of the bench is expected to be completed within six months of final fulfillment of each pledge.

BENCH OPTIONS & Minimum Donation Levels

These commemorative benches and chairs of long-lasting materials will be maintained in place for a minimum of 20 years.

Possible choices for each site, as determined by the access available for installation, are listed on the following pages. We can discuss alternative designs.

Plaques for new benches of long-lasting cast aluminum with raised lettering.

Minimum donations reflect estimated cost of particular bench, plus a \$1000 gift.

The full amount should be allowable as a tax-deductible contribution.

Rustic two local boulders & plank bench = at least \$2,000 gift
(\$1,000 to endowment)



Manufactured 5' bench, linear plaque mounted on back = at least \$1,500 gift
(\$1,000 to endowment)



Two-sided bench with plaque mounted on base = at least \$2,000 gift
(\$1,000 to endowment)



1 recycled plastic armchair (of 2 at each site) =
at least \$800 gift (\$500 to endowment)

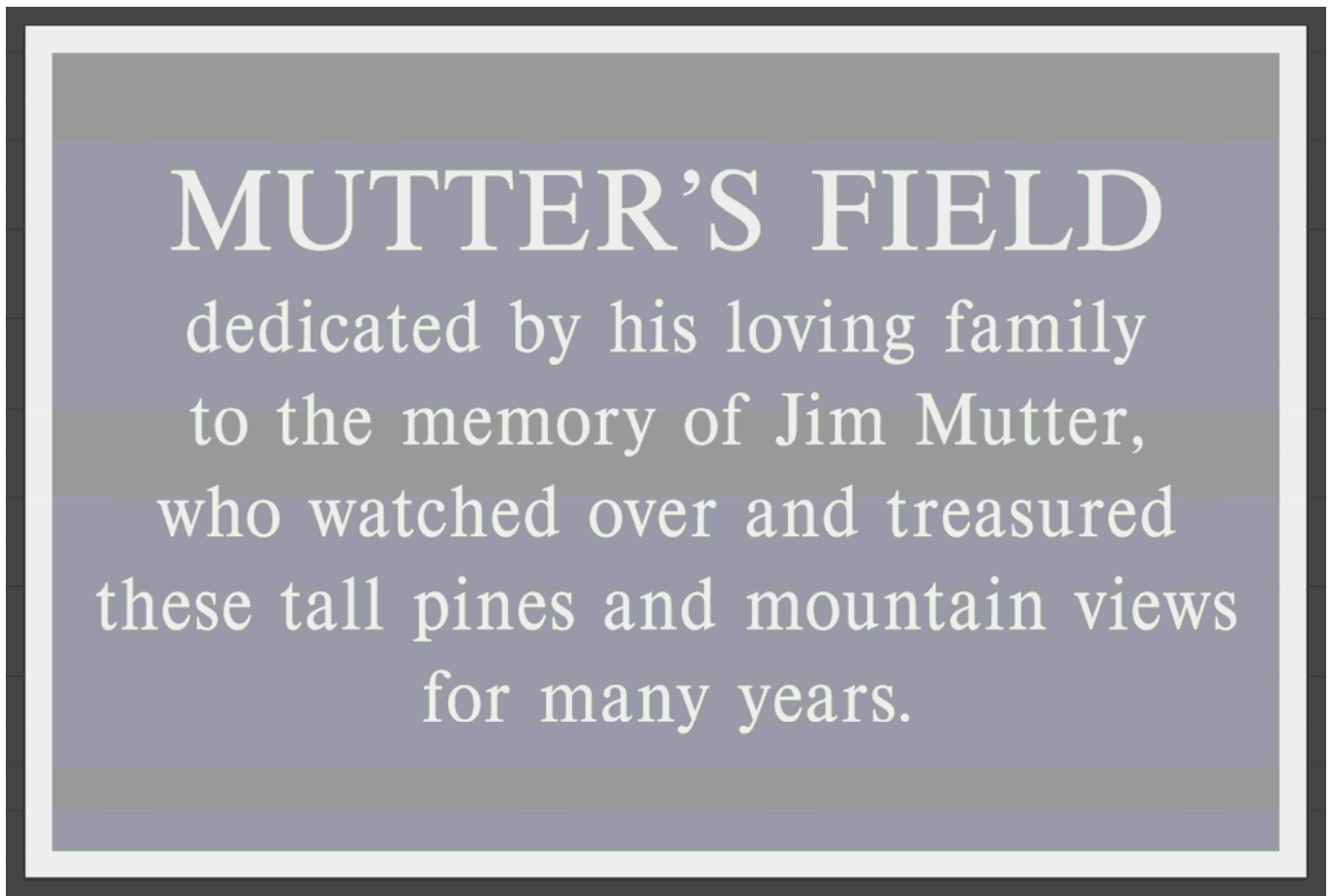
These chairs will provide a place to sit and watch wildlife
at the two Pomeroy Meadows viewing platforms.



Example of bench plaque (33" wide x 2" high cast aluminum)
for 5' manufactured benches



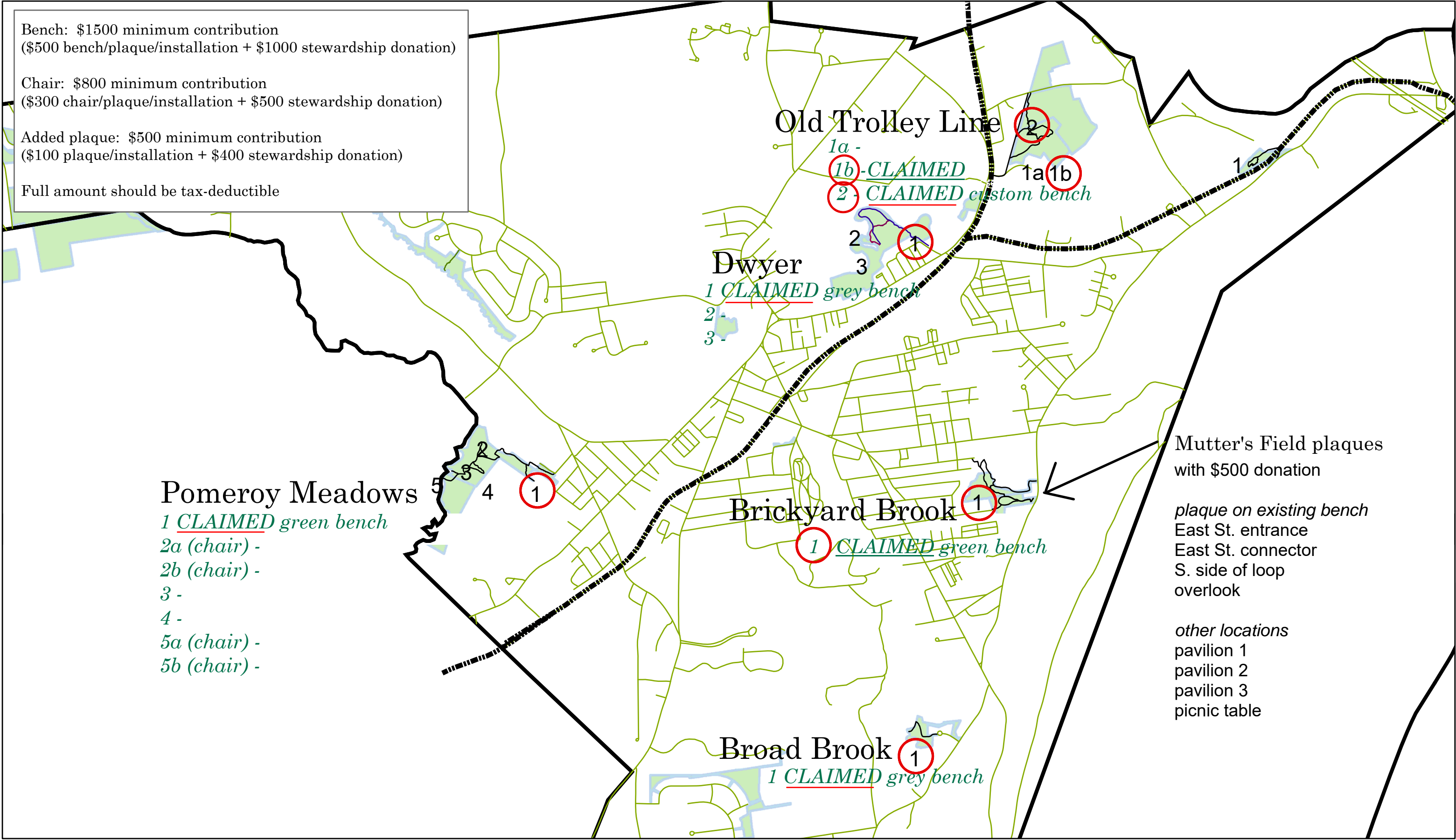
Example of bench plaque (12" wide x 8" high cast aluminum)
for 6' custom benches



Example of small plaque
(7" wide x 3.5" high etched stainless steel)
for existing benches, pavilion, & picnic table at Brickyard Brook
\$500 minimum donation, \$400 to endowment



Commemorate a loved one, honor a friend, salute a business, celebrate an event...



Brickyard Brook Conservation Area & Mutter's Field

Between East and East Green Streets and Mount Tom Avenue

Eight small plaque sites: On existing benches, picnic benches, and pavilion

Located at the center of several neighborhoods, Brickyard Brook was already Pascommuck's most-visited conservation area. The addition of the Mutter's Field tract and construction of the universal trail has only added to its popularity. Donations of at least \$500 are marked here by addition of a smaller steel plaque to one of four existing benches, a picnic bench, or the pavilion (3 plaques).

Edward Dwyer Conservation Area

Terrace View off Pleasant Street

~~Three~~ **two bench sites:** All replacing existing benches

*The trails at this 35-acre conservation may have an unimpressive start in a busy neighborhood, but they soon reach the banks of the meandering Manhan River, where the **first** bench site is located. A **second** site on a level stretch further down the trail also overlooks the Manhan. The **third**, more remote, site is located on the Oxbow Overlook spur trail, above a seasonal pond.*

Bench One options [ALREADY RESERVED]:

- Formal stone slab & plank bench
- Mixed slab/boulder & plank bench
- Rustic two-boulder bench

Benches Two and Three options:

- Manufactured 5' bench with plaque mounted on back
- 6' basic bench with plaque mounted on base

Edward Dwyer Conservation Area: Bench One
[ALREADY RESERVED]

site

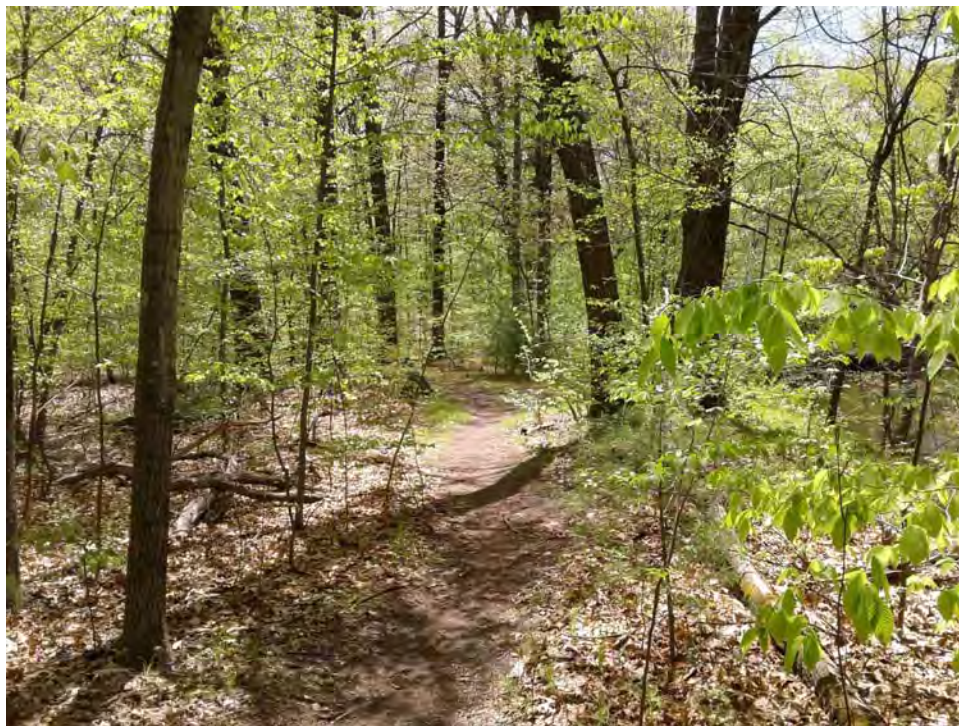


view



Edward Dwyer Conservation Area: Bench Two

site



view

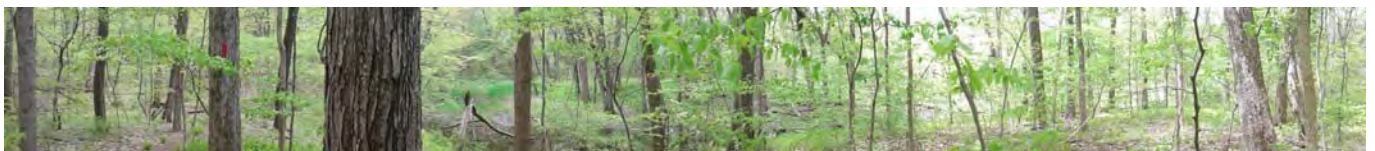


Edward Dwyer Conservation Area: Bench Three

site



view



Pomeroy Meadows Conservation Area

Ranch Avenue off South Street

~~Five~~ **four** sites: New benches

*The 38-acre Pomeroy Meadow Conservation Area has the longest trail system with a wide variety of landscape, from the pastoral to the dramatic. The bench sites are also varied. Bench **One** near the start of the trail system overlooks one of the deep hemlock dingles (site already reserved). **Two** and **Three** are on the edges of a field kept open as bird habitat, with a backdrop of tall white pine trees. The remaining additions will provide seating at two viewing platforms: **Four** is perched on a hillside above a seasonal floodplain pond, and **Five** overlooks a sharp bend in the Manhan River, where visitors may spot turtles, ducks, and fish.*

Locations ~~One~~, Three, and Four options:

Manufactured 5' bench with plaque mounted on back

6' armless bench with plaque mounted on base

Two-boulder bench with plaque on boulder

Locations Two and Five options:

Two manufactured chairs (each can be funded separately)

Two manufactured chairs (each can be funded separately)

Pomeroy Meadow Conservation Area: Bench One
ALREADY RESERVED

site



view



Pomeroy Meadow Conservation Area: Location Two (two chairs)

site



view



Pomeroy Meadow Conservation Area: Bench Three

site



view



Pomeroy Meadow Conservation Area: Bench Four

site



view

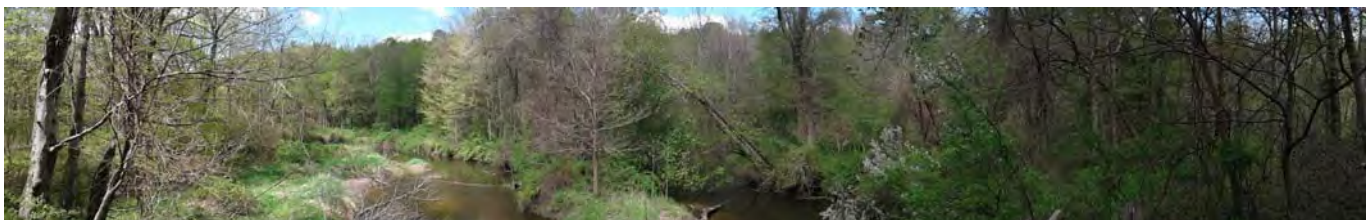


Pomeroy Meadow Conservation Area: Location Five (two chairs)

site



view



Old Pascommuck Conservation Area

East Street, near Route 5

One bench site: Replacement bench

*At 4 acres, Old Pascommuck is of a modest size, but occupies a location with a rich history, near the site of the original Native American and colonial villages which eventually grew into Easthampton. The short loop trail runs along the Manhan River near its confluence with the Oxbow and then up to the **bench** site high above the River. Because of its location just off the Rail Trail near the planned Mount Tom Trailhead Park, visits to this conservation area are likely to increase in coming years.*

Bench options:

- 5' manufactured bench with plaque mounted on back

- 6' armless bench with plaque mounted on base

Old Pascommuck Conservation Area: Bench One

site



view



Old Trolley Line Conservation Area

Clapp Street, near Mass Audubon's Arcadia Wildlife Sanctuary

~~Two~~ **one bench sites:** Two new benches One bench still available

*The trail system at Old Trolley Line was created recently. The **First** benches will be located in the midst of the lively bird and insect life of a rich open meadow, with one facing the woods, and the other towards a small pool favored by birds (site already reserved). The **Second** offers one of the most picturesque views of the Mount Tom Range, seen over a rolling farm field. (site already reserved)*

Bench Site One option:

TWO 5' manufactured benches

Bench Two options: (ALREADY RESERVED)

Formal stone slab & plank bench

Mixed slab/boulder & plank bench

Rustic two-boulder bench

Old Trolley Line Conservation Area: Bench Location One (two benches)
(1 bench site still available)

site (final location determined after photos were taken)



view (final location determined after photos were taken)



BENCH SITE ALREADY RESERVED !
Old Trolley Line Conservation Area: Bench Two

site



view



BENCH SITE ALREADY RESERVED !

Broad Brook Meadows Conservation Area

Brittany Lane, off Hendrick Street

One bench site: New bench

*At 6.65 acres, Broad Brook Meadows is small but adjoins an extensive city-owned parcel at the intersection of Hendrick, East, and Holyoke Streets. A short but picturesque trail leads down to the stream, which flows from Southampton into Nashawannuck Pond. The **bench site** is in the mature pine and hemlock wood up above the stream, at the junction of Pascommuck's trail and an informal path leading to the City parcel.*

Bench options:

Backed bench with plaque mounted on base

Backed bench with plaque mounted on back

Basic bench with plaque mounted on base