

Celebrate a loved one . . .
Commemorate a great event . . .
Boost your local business . . .

and help us maintain Easthampton's
treasured natural areas
and public trails.

1982-2023

*41 Years of
Saving the
Best of
Easthampton's
Nature for All*



Pascommuck Conservation Trust has ~~15~~ **9** remaining beautiful sites waiting for beautiful benches & chairs: We want to add to the welcome our conservation areas offer visitors as we celebrate 40+ years of conservation.

Your dedicated donation will purchase a sturdy bench (\$1700 minimum), chair (\$900 minimum), or plaque on an existing bench (\$500 minimum). A plaque will honor your loved one, promote a business, or quote a favorite nature poem. Your gift will add to our Stewardship Endowment to maintain and enhance these treasured retreats.

The Endowment generates income to help cover such costs as keeping trails clear of downed trees, annual mowing to maintain bird habitat, rebuilding bridges & steps, and fighting invasive plants -- all critical to ensuring these places remain welcoming, beautiful, and ecologically healthy.

details inside

WHY

Pascommuck Conservation Trust has no paid staff, meaning your gifts always go directly towards protecting land, maintaining our conservation areas for public access and habitat protection, and the few unavoidable expenses such as accounting necessary to keep operating.

We have also relied almost entirely on board & volunteer hours for property upkeep. But in recent times, the added burdens of damage from severe weather, aging board members, and increased use of our conservation areas has made it necessary to supplement our own time with contracted part-time assistance, particularly for any work requiring specialized expertise or involving heavy equipment.

We are asking for your help in building a modest endowment to supplement our regular fundraising and cover not only a portion of those contractor fees, but also materials for replacement or new bog bridges, steps, etc., clearing downed trees, sign maintenance, enhancement of habitat for wildlife and native plants, and other ongoing stewardship.

HOW

Pascommuck is accepting bids and gift pledges for the stewardship endowment. Subject to the discretion of the Board, opportunities to endow a bench at a particular location will be 'first come, first served'. We would be happy to discuss with anyone interested in donating the details of bench locations and options, to consider dedication wording with you, and to guide visits to the sites.

Each bench will have only one plaque with limited space, but you are welcome to combine gifts from family members, a business, or a group to make up the full cost of your bench.

Partial fulfillment of pledges will be requested upon final selection, so cost of materials and contractors can be covered. Accounting for fabrication delays and weather (and remembering we are all volunteers!), installation of the bench is expected to be completed within six months of final fulfillment of each pledge.

BENCH OPTIONS & Minimum Donation Levels

These commemorative benches and chairs of long-lasting materials will be maintained in place for a minimum of 20 years.

Possible choices for each site, as determined by the access available for installation, are listed on the following pages. We can discuss alternative designs. Plaques for new benches of long-lasting cast aluminum with raised lettering.

Minimum donations reflect cost of bench + plaque, plus a \$1000 gift. The full amount should be allowable as a tax-deductible contribution.

Manufactured 5' bench, linear plaque mounted on back = at least \$1,700 gift (\$1,000 to endowment)



Manufactured 4' bench, linear plaque mounted on back = at least \$1,500 gift (\$1,000 to endowment)



1 recycled plastic chair (of 2 at each site)
with plaque mounted on viewing platform =
at least \$900 gift (\$500 to endowment)

These chairs will provide a place to sit and watch wildlife at the
two Pomeroy Meadows viewing platforms.



Examples of plaques
(18" wide x 2-1/2" high cast aluminum)



In memory of Carl and Bliss Walz

Come to the woods, for here is rest.

Example of plaques for new chairs at
Pomeroy Meadow (\$900 donation)
(12" wide x 1.5" high etched aluminum)

In memory of Ralph Waldo Emerson

Plaque for existing benches at Mutter's Field
(\$500 donation)
(7" wide x 3.5" high etched stainless steel)

donated by the

The Helping Hand Society

2016

Commemorate a loved one, honor a friend, salute a business, celebrate an event...

Bench: \$1700 (5' bench) \$1500 (4' bench) minimum contribution
(\$700 bench/plaque/installation + \$1000 stewardship donation)

Chair: \$900 minimum contribution
(\$400 chair/plaque/installation + \$500 stewardship donation)

Added plaque: \$500 minimum contribution
(\$100 plaque/installation + \$400 stewardship donation)

Full amount should be tax-deductible

Pomeroy Meadows

1 INSTALLED green

2a (chair) -

2b (chair) -

3 - (bench)

4 - (bench)

5a (chair) -

5b (chair) -

Pascommuck Bench Project: Bench/Chair Locations

Old Trolley Line

1a INSTALLED

1b INSTALLED

2 INSTALLED

custom bench

Dwyer

1 INSTALLED grey bench

2 -

3 -

Brickyard Brook

1 INSTALLED green bench

Broad Brook

1 INSTALLED grey bench

Old Pascommuck

Mutter's Field plaques
with \$500 donation

plaque on existing benches at:
East St. entrance
East St. connector
S. side of loop
overlook
south picnic bench

pavilion (CLAIMED)
north picnic bench (CLAIMED)

Brickyard Brook Conservation Area & Mutter's Field

Between East and East Green Streets and Mount Tom Avenue

Six plaque sites: On existing benches, and one picnic bench.

Located at the center of several neighborhoods, Brickyard Brook was already Pascommuck's most-visited conservation area. The addition of the Mutter's Field tract and construction of the universal trail has only added to its popularity. Donations of at least \$500 are marked here by addition of a smaller steel plaque to one of four existing benches. Donors have already generously donated for plaques on one of the picnic benches and the pavilion.

Edward Dwyer Conservation Area

Terrace View off Pleasant Street

~~Three~~ **two bench sites:** All replacing existing benches

*The trails at this 35-acre conservation may have an unimpressive start in a busy neighborhood, but they soon reach the banks of the meandering Manhan River, where the **first** bench is located (claimed!). A **second** site on a level stretch further down the trail also overlooks the Manhan. The **third**, more remote, site is located on the Oxbow Overlook spur trail, above a seasonal pond.*

Bench One options [ALREADY INSTALLED]:

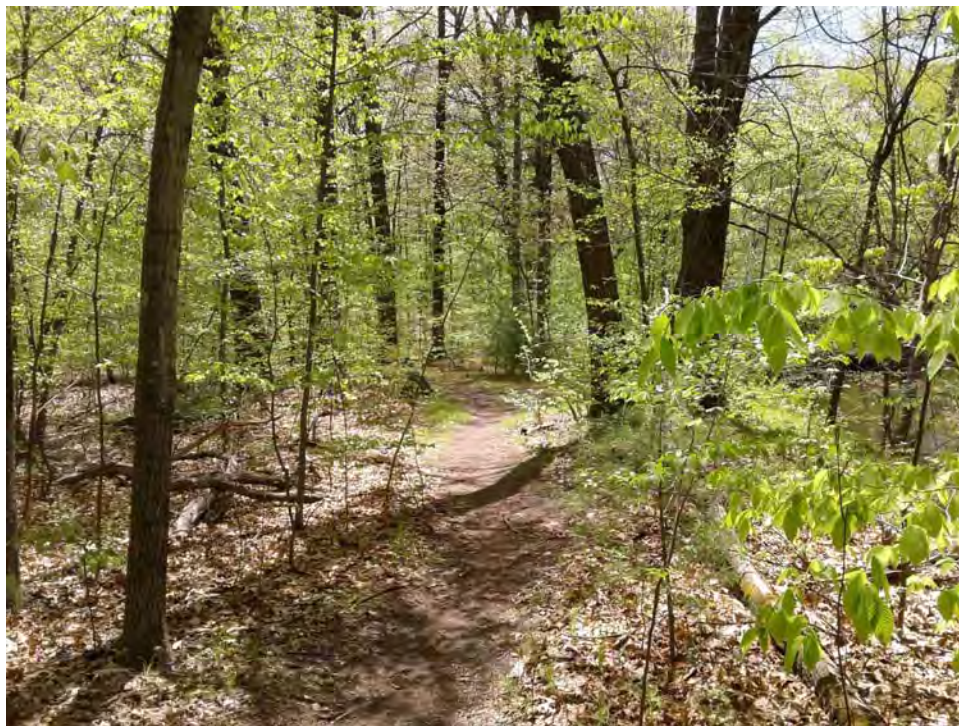
Benches Two and Three options:

Manufactured 5' bench with plaque mounted on back

6' basic bench with plaque mounted on base

Edward Dwyer Conservation Area: Bench Two

site



view

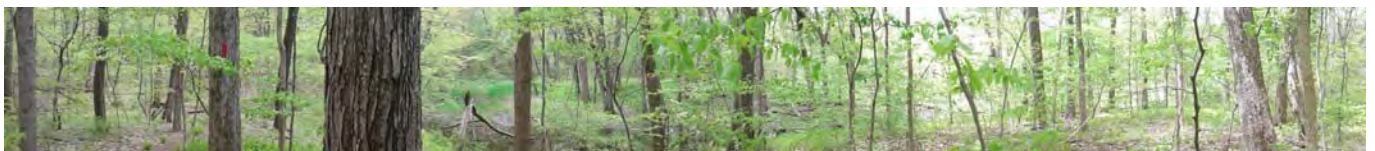


Edward Dwyer Conservation Area: Bench Three

site



view



Pomeroy Meadows Conservation Area

Ranch Avenue off South Street

~~Five~~ **four** sites: New benches

*The 38-acre Pomeroy Meadow Conservation Area has the longest trail system with a wide variety of landscape, from the pastoral to the dramatic. The bench sites are also varied. Bench **One** near the start of the trail system overlooks one of the deep hemlock dingles (donation already made & bench installed). **Two** and **Three** are on the edges of a field kept open as bird habitat, with a backdrop of tall white pine trees. The remaining additions will provide seating at two viewing platforms: **Four** is perched on a hillside above a seasonal floodplain pond, and **Five** overlooks a sharp bend in the Manhan River, where visitors may spot turtles, ducks, and fish.*

Locations ~~One~~, Three, and Four options:

- Manufactured 5' bench with plaque mounted on back
- 6' armless bench with plaque mounted on base
- Two-boulder bench with plaque on boulder

Locations Two and Five options:

- Two manufactured chairs (each can be funded separately)
- Two manufactured chairs (each can be funded separately)

Pomeroy Meadow Conservation Area: Location Two (two chairs)

site



view



Pomeroy Meadow Conservation Area: Bench Three

site



view



Pomeroy Meadow Conservation Area: Bench Four

site



view

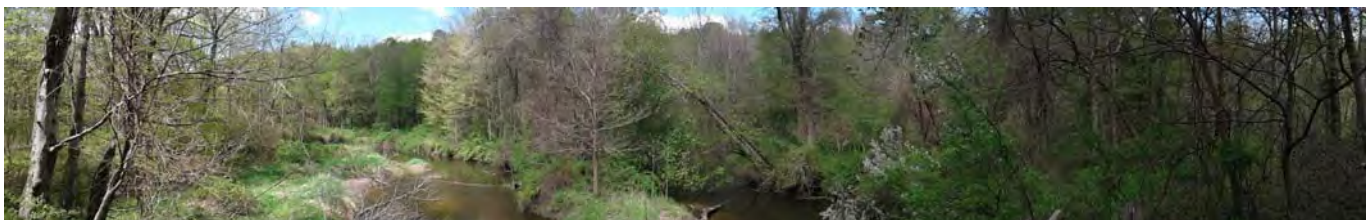


Pomeroy Meadow Conservation Area: Location Five (two chairs)

site



view



Old Pascommuck Conservation Area

East Street, near Route 5

One bench site: Replacement bench

*At 4 acres, Old Pascommuck is of a modest size, but occupies a location with a rich history, near the site of the original Native American and colonial villages which eventually grew into Easthampton. The short loop trail runs along the Manhan River near its confluence with the Oxbow and then up to the **bench** site high above the River. Because of its location just off the Rail Trail near the new Mount Tom Trailhead Park, visits to this conservation area are likely to increase in coming years.*

A generous 2023 gift of neighboring property has expanded this area to include more of the globally-rare floodplain forest along the Manhan and Oxbow.

Bench options:

5' manufactured bench with plaque mounted on back

6' armless bench with plaque mounted on base

Old Pascommuck Conservation Area: Bench One

site



view



Old Trolley Line Conservation Area

Clapp Street, near Mass Audubon's Arcadia Wildlife Sanctuary

~~Two~~ **one bench sites:** Two new benches (one bench still available)

*The trail system at Old Trolley Line was created recently. The **First** benches will be located in the midst of the lively bird and insect life of a rich open meadow, with one facing the woods (this bench still available), and the other towards a small pool favored by birds (this bench already funded & installed).*

*The **Second** offers one of the most picturesque views of the Mount Tom Range, seen over a rolling farm field. (site already reserved)*

Bench Site One option:

5' manufactured bench

Bench Two options: (ALREADY FUNDED & INSTALLED)

Formal stone slab & plank bench

Mixed slab/boulder & plank bench

Rustic two-boulder bench

Old Trolley Line Conservation Area: Bench Location One (two benches)
(1 bench still available)



view for 2nd bench

